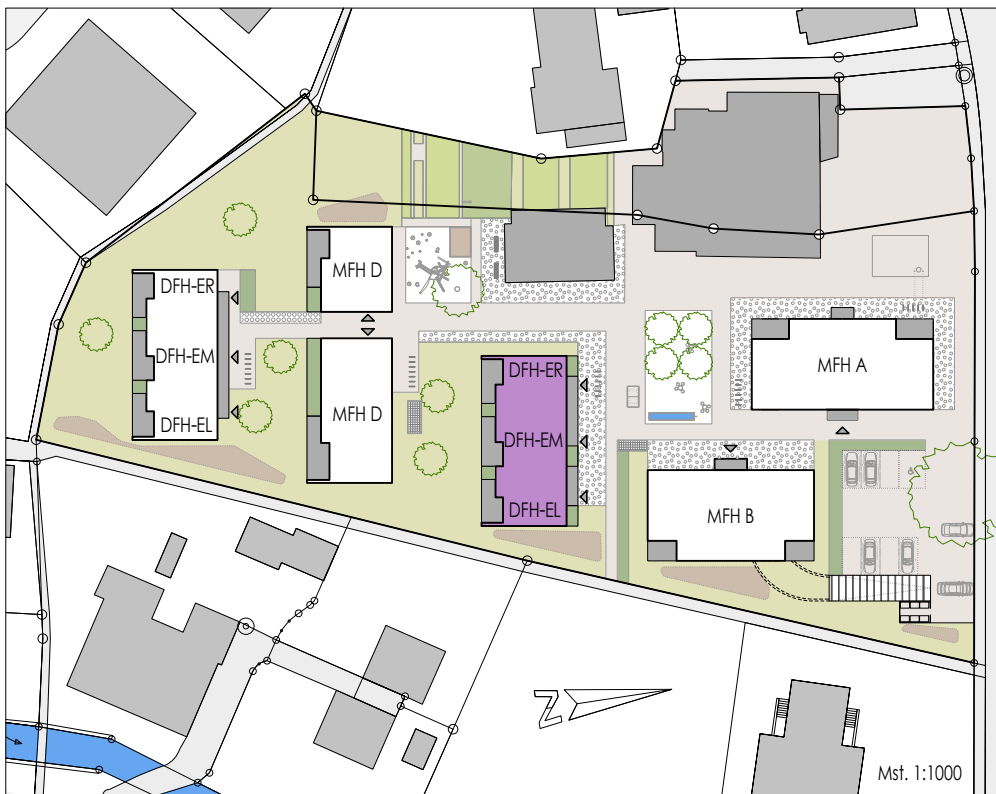
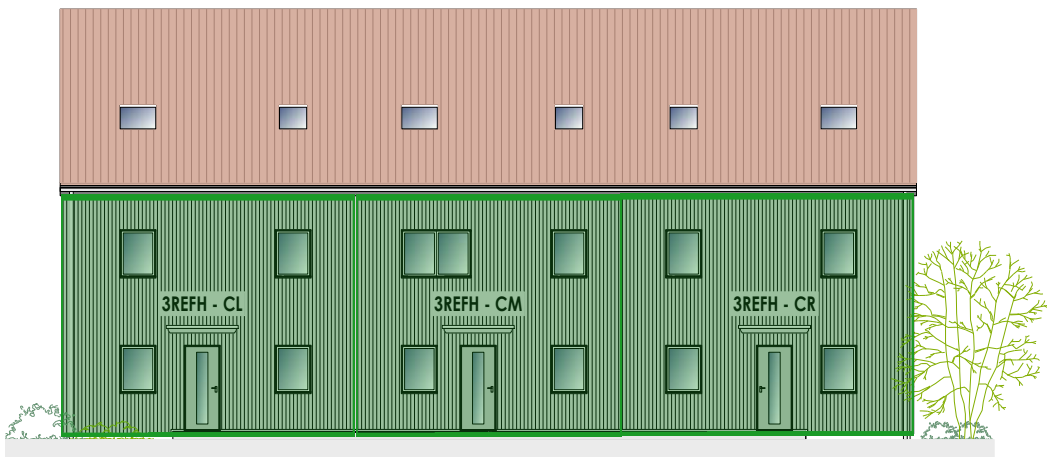
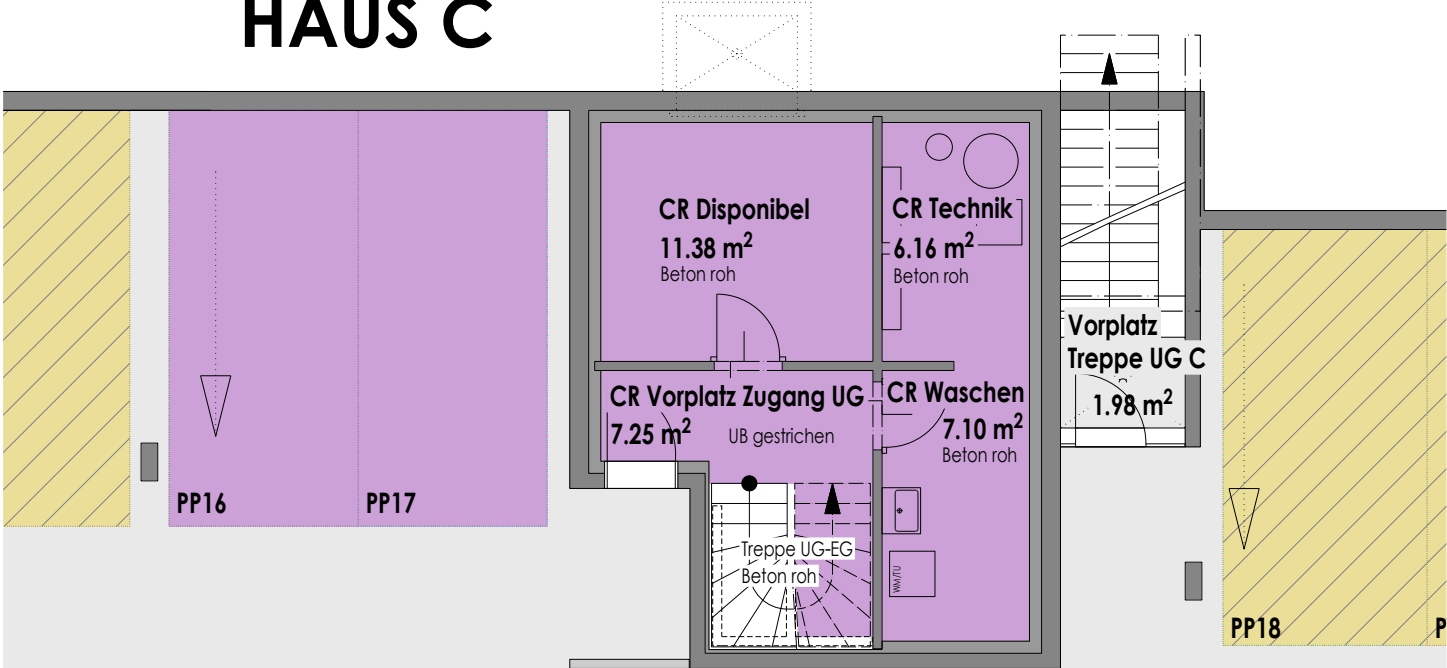


Wohnungsspiegel Haus C / 3REFH						
Whg. Nr.	Lage	Zimmer	m2 UG-OG	m2 DG nicht ausgebaut	Sitzplatz m2	Verkaufsstatus
CL	Links	5	159.5	60.7	14.6	Frei
CM	Mitte	5	159.2	60.1	16.4	Frei
CR	Rechts	5	159.5	60.7	14.6	Frei



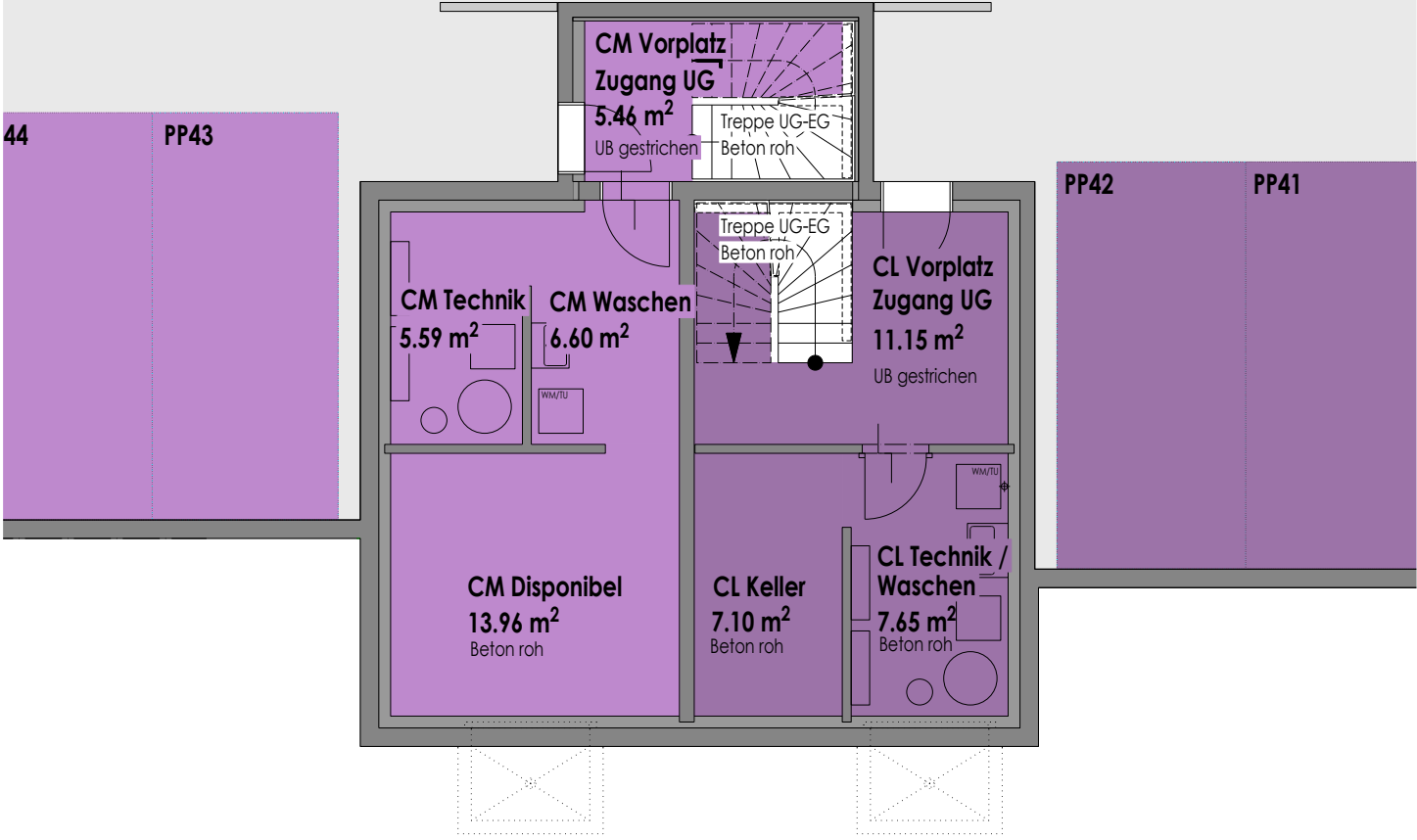
HAUS C

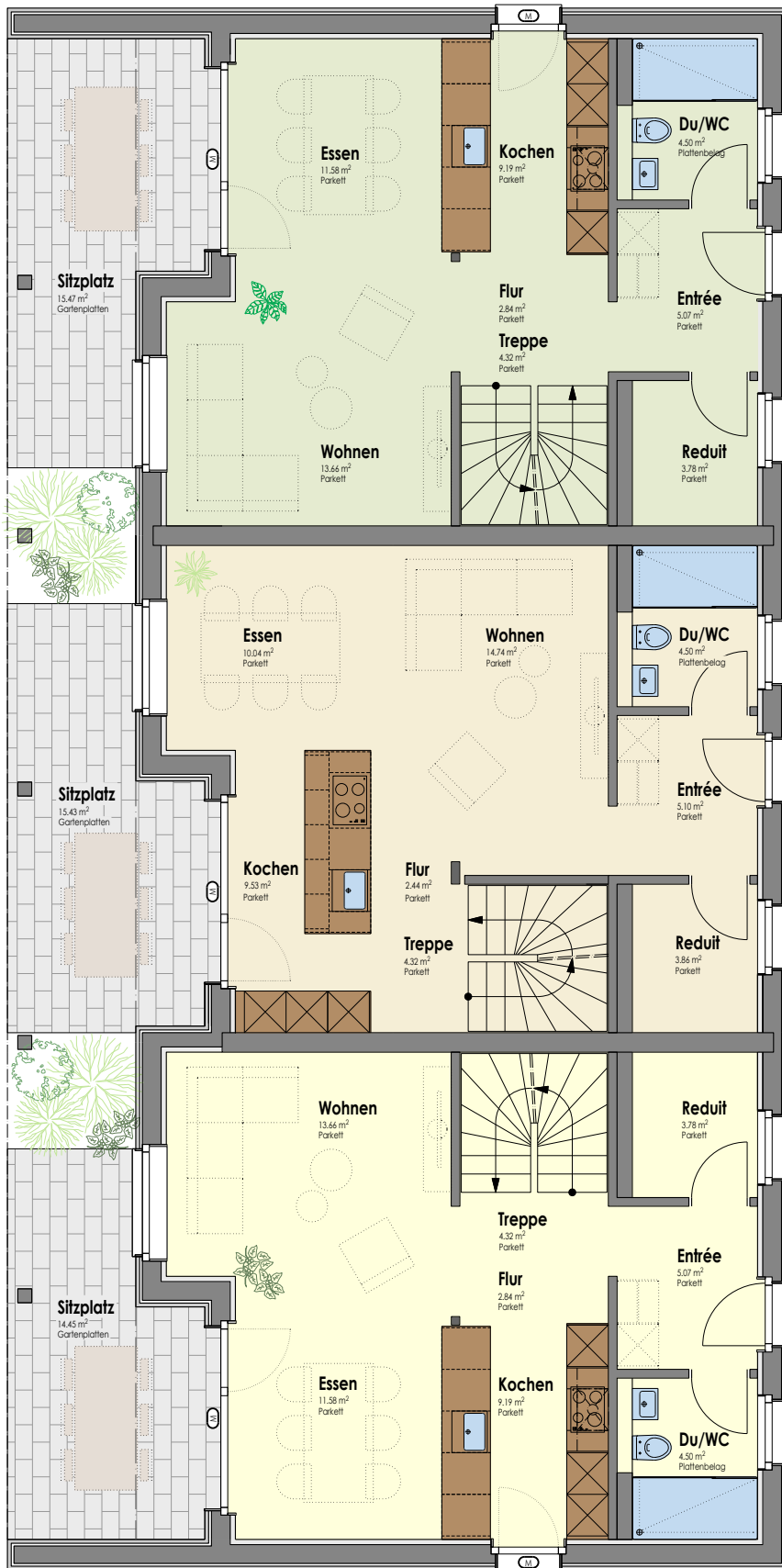


Tiefgarage Haus A-E

1550.12 m²

Monobeton roh

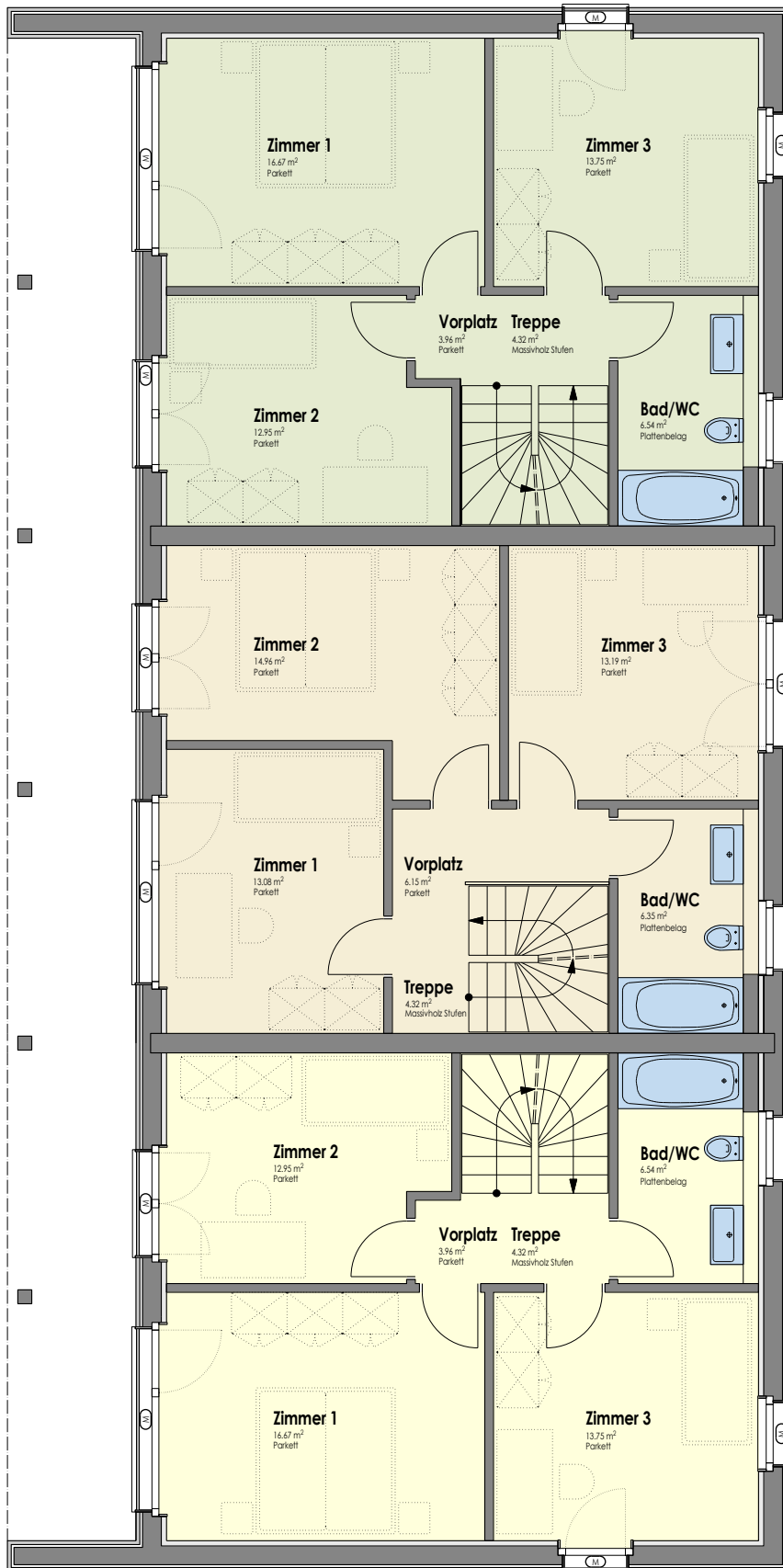




DFH - CR
 NWF EG: 54.70 m²

DFH - CM
 NWF EG: 54.50 m²

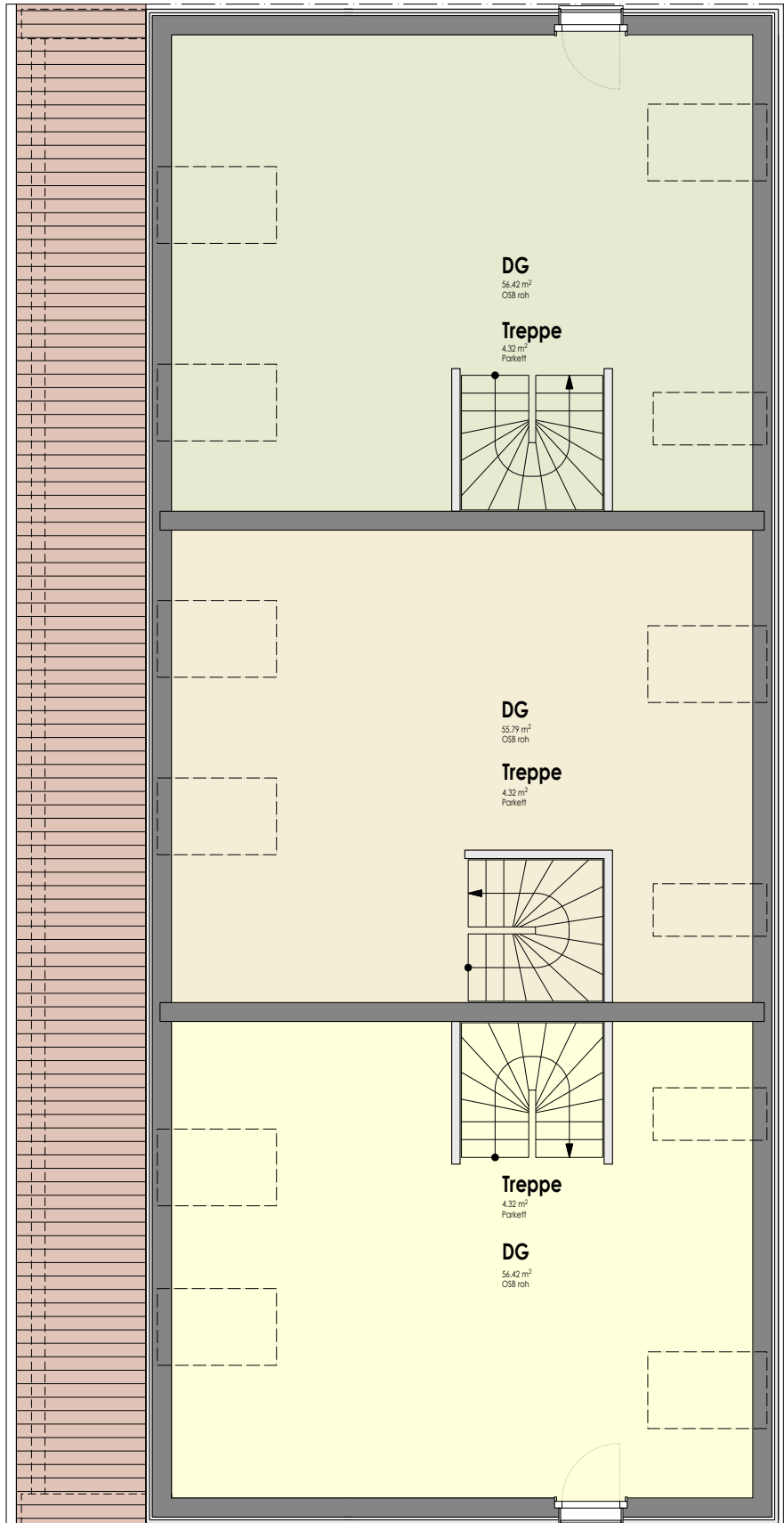
DFH - CL
 NWF EG: 54.70 m²



DFH - CR
 NWF OG: 58.10 m²

DFH - CM
 NWF OG: 58.00 m²

DFH - CL
 NWF OG: 58.10 m²



DG
56.42 m²
OSB roh

Treppe
4.32 m²
Parkett

DFH - CR
NWF DG: 60.70 m²

DG
55.79 m²
OSB roh

Treppe
4.32 m²
Parkett

DFH - CM
NWF DG: 60.10 m²

Treppe
4.32 m²
Parkett

DG
56.42 m²
OSB roh

DFH - CL
NWF DG: 60.70 m²